

# OPTICLIMATE REVOMAXII - FREE AIR

FREE AIR 30000

## FREE AIR

The OptiClimate RevomaxII is a state-of-the-art climate control system designed to create the ideal growing environment for a wide range of plant species. Utilising advanced Infinity DC inverter technology, this system offers unparalleled flexibility in climate control, allowing for precise adjustments in increments as small as one-tenth of a Hertz for cooling, heating and dehumidification. The RevomaxII Free Air is designed to blow air freely without the need for a ducting system or hoses. It has been engineered to occupy minimal space while ensuring maximum efficiency. Its compact design not only reduces its footprint but also minimises light obstruction, making it an excellent choice for optimising growing conditions.



## KEY FEATURES

**Broad Capacity Range:** We can adjust the cooling capacity in significantly smaller increments than our competitors. We achieve 20–30 per cent increments, compared to over 60 per cent with our competitors. This ensures a highly stable climate all year round.

**Optimised for LED Growing:** Designed to overcome the challenges of growing with LED lights by ensuring the room reaches optimal temperatures for photosynthesis more quickly and efficiently.

**Advanced Safety Features:** Includes built-in temperature protection, an optional water leak safeguard, and a fireproof system to ensure operation is as safe as it is efficient.

**Smart Remote Control:** Supplied with a smart remote controller for easy management of settings, with alarms and warnings sent via email for enhanced convenience and monitoring.

**Superior Air Quality Management:** The built-in lightweight filter keeps internal components clean, ensuring your plants thrive at every stage of the growth cycle.

## DE-HUMIDIFICATION PERFORMANCE - liters per 24 Hrs

All values are calculated at 27° Celcius and a base humidity of 60%. Actual results may vary based on circumstances.

**6000**

85 Liters

**10000**

105 Liters

**15000**

165 Liters

**21000**

230 Liters

**30000**

315 Liters

## ACCESSORIES

### INCLUDED



Smart Remote Controller for daily operation, remote capabilities included



Humidity, light and temperature sensors for precise readings and control



Various mounting and connections accessories



Mounting brackets to mount the RevomaxII safely to ceiling, wall or surface

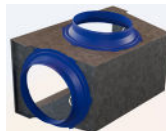
### OPTIONAL



Watercooler for highly efficient closed loop cooling & humidification systems



Inverters for continuous automated control over watercooler and waterpump for the most stable climate thinkable

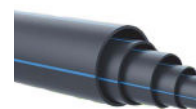


Plenumbox for installing the RevomaxII outside of the growing area for extra installing convenience



Flexible air hoses in different lengths and materials to match your requirements

### BRING YOUR OWN



Water piping, connection and drainage, we recommend PE Piping



Waterpiping installation materials



1- or 3-phase (depending on model) power connections in appropriate capacity



Networking and internet connection for control and remote access

<https://www.opticlimat.com/nl/knowledge-base/>

Scan the QR-code to go to our online knowledge base for the latest manuals and information

or

Visit us at [www.aurluxtechnologies.com](http://www.aurluxtechnologies.com)



# OPTICLIMATE REVOMAXII - FREE AIR

FREE AIR 30000

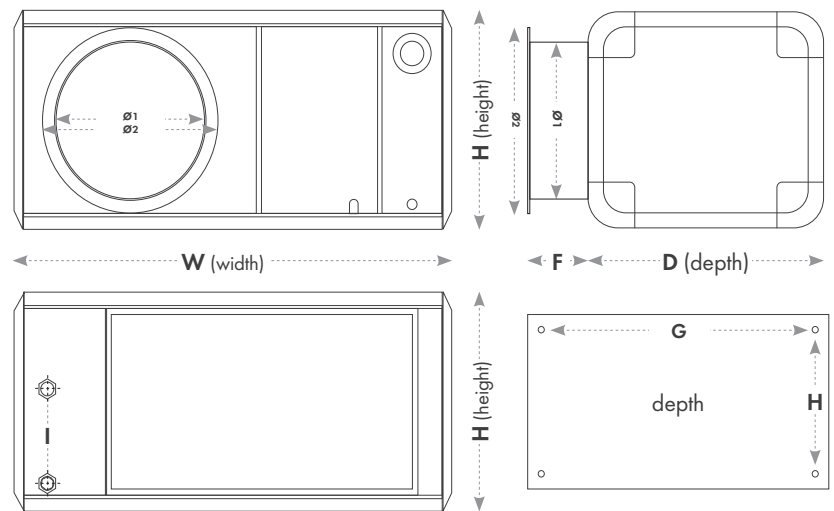
## DIMENSIONS (MM)

Model	W	D	H	Ø1	Ø2	F	G	H	I
6000	910	570	440	245	310	55	805	405	250
10000	990	670	490	245	310	55	870	500	250
15000	1140	700	550	310	410	70	1015	535	250
21000	1220	820	590	398	-	-	1100	660	250
30000	1480	860	750	448	-	-	1365	675	465

## WEIGHT

Model	KG	LB
6000	79	174,1
10000	94	207,2
15000	124	273,3
21000	181	399,0
30000	232	511,5

## LINE DRAWING



## SPECIFICATIONS - FREE AIR

MODEL	30000 FREE AIR
Nominal Power Capacity - kWatt	30 kW
Maximum Power Capacity - kWatt	35 kW
De-humidification Capacity - Liters/24Hrs*	315 L
<b>Electricity</b>	
Power Supply - Volt	400v
Phase	3
Compressor (inverter) - Volt	DC (400v)
Compr. Freq. Min (Max) - Hz	30 (85) Hz
Fuse MCB single-phase (3-phase)	C50 3ph+N
Total 3-Phase Ampere	36 A
Total 1-Phase Ampere	n/a
Cable diameter (mm) 3 phase	10 mm <sup>2</sup>
Cable diameter (mm) 1 phase	n/a
Internal Glass Fuse Heater (3x) - Ampere	16 A
Internal Glass Fuse Main - Ampere	8 A
Power Factor cos Φ	0,9
<b>Cooling &amp; Heating</b>	
Nominal (cooling) rated power - kWatt	9 kW
Max cooling rated power - kWatt	9 kW
Max current (cooling) - Ampere	25 A
Electrical Heating Power - kWatt	3 x 3,7 kW
Electrical Heating Current - Ampere	3 x 16,0 A
De-Humidify 20 degrees WB - kg	19 kg
Coefficient of Performance COP	3,3
Total max power cap. (heating& cooling)	26,1 kW
<b>Airflow</b>	
Rated Air Flow m <sup>3</sup> /h	6500 m <sup>3</sup> /h
Static Pressure Pascal	0 Pa
Rated Air Flow m <sup>3</sup> /h	5000 m <sup>3</sup> /h
Static Pressure Pascal	200 Pa
<b>Refrigerant</b>	
Type	R410A
Charge Volume - kg	6,0 kg
GWP number	2088
CO2 Equivalent - Ton	12,53
<b>Flow demand cold water (25 deg. Celcius Max)</b>	
Cooling mode - Liters/min	3,0 - 20,0 L/min
Heating mode - Liters/min	0,0 - 20,0 L/min
<b>Flow demand recirculating water</b>	
Cooling mode - m <sup>3</sup> /hour	6 m <sup>3</sup> /h
Heating mode - m <sup>3</sup> /hour	6 m <sup>3</sup> /h
<b>Water Temperature Limits</b>	
Temp In (recirculating) - ° Celcius Max	25 (55) °
Temp Out (recirculating) - ° Celcius Max	65 (65) °
Delta (recirculating) - AT	5 °
<b>Size L x W x H cm</b>	148 x 86 x 74,9 cm
<b>Weight kg</b>	232 kg

## WARRANTY

The Revomax II series and its accessories are designed and manufactured with the utmost care and craftsmanship. Airlux Technologies warrants that the delivered goods will be free from defects for the duration of the applicable warranty period, provided they are used under normal conditions from the original purchase date. If the product develops a defect within this period that is not due to improper use, Airlux Technologies will repair or replace it with a suitable replacement that offers at least the same functionality and specifications. The warranty for the replaced product will continue for the remainder of the original product's warranty period from the initial purchase date. For servicing, the owner must ship the unit to the nearest Airlux Technologies service location, as determined by the service desk. A valid original receipt will be required to confirm warranty eligibility.