

# OPTICLIMATE REVOMAXII - DEEP COOL

6000/10000/15000/15000S/21000/30000

## DEEP COOL

The OptiClimate RevomaxII is a state-of-the-art climate control system designed to create the ideal growing environment for a wide range of plant species. The standard Revomax units can cool a space to approximately 16 degrees Celsius, which is more than sufficient for all plants and vegetables, as they thrive in warmer conditions. However, if you need to convert the space into a cold storage solution—keeping your harvest fresh, much like a refrigerator—we have developed the Revomax Deep Cooling system, specifically designed for post-harvest storage. Depending on insulation and capacity, this unit can cool to temperatures close to zero degrees Celsius.



## KEY FEATURES

**Broad Capacity Range:** We can adjust the cooling capacity in significantly smaller increments than our competitors. We achieve 20–30 per cent increments, compared to over 60 per cent with our competitors. This ensures a highly stable climate all year round.

**Optimised for LED Growing:** Designed to overcome the challenges of growing with LED lights by ensuring the room reaches optimal temperatures for photosynthesis more quickly and efficiently.

**Advanced Safety Features:** Includes built-in temperature protection, an optional water leak safeguard, and a fireproof system to ensure operation is as safe as it is efficient.

**Smart Remote Control:** Supplied with a smart remote controller for easy management of settings, with alarms and warnings sent via email for enhanced convenience and monitoring.

**Superior Air Quality Management:** The built-in lightweight filter keeps internal components clean, ensuring your plants thrive at every stage of the growth cycle.

## DE-HUMIDIFICATION PERFORMANCE - liters per 24 Hrs

All values are calculated at 27° Celcius and a base humidity of 60%. Actual results may vary based on circumstances.

6000	10000	15000	21000	30000
85 Liters	105 Liters	165 Liters	230 Liters	315 Liters

## ACCESSORIES

### INCLUDED



Smart Remote Controller for daily operation, remote capabilities included



Humidity, light and temperature sensors for precise readings and control



Various mounting and connections accessories



Mounting brackets to mount the RevomaxII safely to ceiling, wall or surface

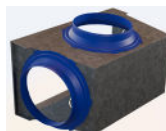
### OPTIONAL



Watercooler for highly efficient closed loop cooling & humidification systems



Inverters for continuous automated control over watercooler and waterpump for the most stable climate thinkable



Plenumbox for installing the RevomaxII outside of the growing area for extra installing convenience



Flexible air hoses in different lengths and materials to match your requirements

### BRING YOUR OWN



Water piping, connection and drainage, we recommend PE Piping



Waterpiping installation materials



1- or 3-phase (depending on model) power connections in appropriate capacity



Networking and internet connection for control and remote access

<https://www.opticclimate.com/nl/knowledge-base/>

Scan the QR-code to go to our online knowledge base for the latest manuals and information

or

Visit us at [www.aurluxtechnologies.com](http://www.aurluxtechnologies.com)



# OPTICLIMATE REVOMAXII

REGULAR - 6000/10000/15000/15000S/21000/30000

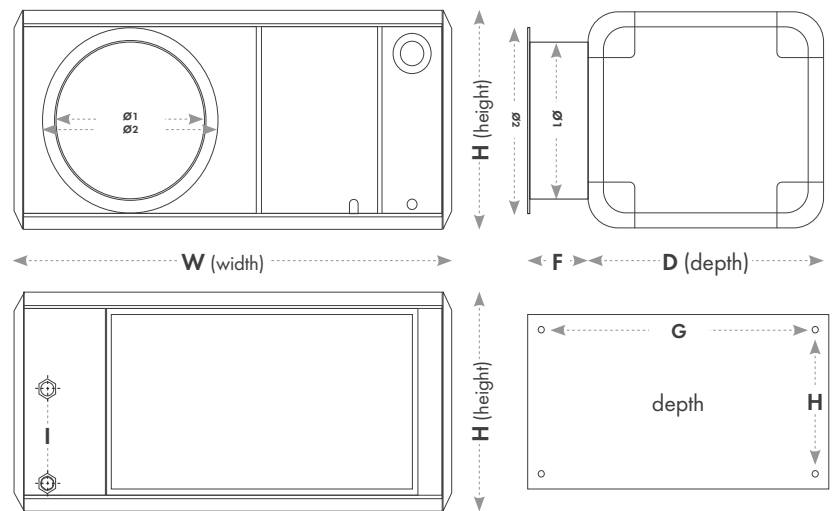
## DIMENSIONS (MM)

Model	W	D	H	Ø1	Ø2	F	G	H	I
6000	910	570	440	245	310	55	805	405	250
10000	990	670	490	245	310	55	870	500	250
15000	1140	700	550	310	410	70	1015	535	250
21000	1220	820	590	398	-	-	1100	660	250
30000	1480	860	750	448	-	-	1365	675	465

## WEIGHT

Model	KG	LB
6000	79	174,1
10000	94	207,2
15000	124	273,3
21000	181	399,0
30000	232	511,5

## LINE DRAWING



## SPECIFICATIONS - DEEP COOL

MODEL	6000 REV2	10000 REV2	15000S REV2	15000 REV2	21000 REV2	30000 REV2
Nominal Power Capacity - kWatt	6 kW	10 kW	15 kW	15 kW	21 kW	30 kW
Maximum Power Capacity - kWatt	7 kW	12 kW	19 kW	19 kW	23 kW	35 kW
De-humidification Capacity - Liters/24Hrs*	85 L	105 L	165 L	165 L	230 L	315 L
<b>Electricity</b>						
Power Supply - Volt	230v-400v	230v-400v	230v-400v	400v	400v	400v
Phase	1 or 3	1 or 3	1 or 3	3	3	3
Compressor (inverter) - Volt	DC (230V)	DC (230V)	DC (230V)	DC (400V)	DC (400v)	DC (400v)
Compr. Freq. Min (Max) - Hz	30 (110) Hz	30 (90) Hz	30 (85) Hz	30 (85)Hz	30 (85) Hz	30 (85) Hz
Fuse MCB single-phase (3-phase)	C32 (C20)	C40 (C25)	C63 (C40)	C25 3ph+N	C32 3ph+N	C50 3ph+N
Total 3-Phase Ampere	17 A	24 A	n/a	23 A	27 A	36 A
Total 1-Phase Ampere	28 A	38 A	68 A	n/a	n/a	n/a
Cable diameter (mm) 3 phase	2,5 mm2	4 mm2	10 mm2	6 mm2	6 mm2	10 mm2
Cable diameter (mm) 1 phase	6 mm2	6 mm2	25 mm2	n/a	n/a	n/a
Internal Glass Fuse Heater (3x) - Ampere	16 A	16 A	16 A	16 A	16 A	16 A
Internal Glass Fuse Main - Ampere	5 A	5 A	5 A	5 A	5 A	8 A
Power Factor cos Φ	0,9	0,9	0,9	0,9	0,9	0,9
<b>Cooling &amp; Heating</b>						
Nominal (cooling) rated power - kWatt	1,3 kW	2,1 kW	5,0 kW	5,0 kW	6,0 kW	9 kW
Max cooling rated power - kWatt	1,9 kW	3,5 kW	6,5 kW	6,5 kW	6,3 kW	9 kW
Max current (cooling) - Ampere	9 A	16 A	30 A	16 A	20 A	25 A
Electrical Heating Power - kWatt	3 x 1,3 kW	3 x 1,6 kW	3 x 2,7 kW	3 x 2,7 kW	3 x 2,7 kW	3 x 3,7 kW
Electrical Heating Current - Ampere	3 x 5,5 A	3 x 8,0 A	3 x 13,0 A	3 x 13,0 A	3 x 13,0 A	3 x 16,0 A
De-Humidify 20 degrees WB - kg	5 kg	8 kg	12 kg	12 kg	17 kg	19 kg
Coefficient of Performance COP	4,6	4,6	3,2	3,5	3,5	3,3
Total max power cap. (heating& cooling)	10,9 kW	16,8 kW	17,6 kW	17,6 kW	17,6 kW	26,1 kW
<b>Airflow</b>						
Rated Air Flow m3/h	1300 m3/h	1900 m3/h	2200 m3/h	2200 m3/h	3900 m3/h	6500 m3/h
Static Pressure Pascal	0 Pa	0 Pa	0 Pa	0 Pa	0 Pa	0 Pa
Rated Air Flow m3/h	1100 m3/h	1600 m3/h	2450 m3/h	2450 m3/h	3100 m3/h	5000 m3/h
Static Pressure Pascal	100 Pa	100 Pa	100 Pa	100 Pa	200 Pa	200 Pa
<b>Refrigerant</b>						
Type	R410A	R410A	R410A	R410A	R410A	R410A
Charge Volume - kg	2,3 kg	2,7 kg	3,45 kg	3,85 kg	4,4 kg	6,0 kg
GWP number	2088	2088	2088	2088	2088	2088
CO2 Equivalent - Ton	4,8	5,64	7,2	7,2	9,19	12,53
<b>Flow demand cold water (25 deg. Celcius Max)</b>						
Cooling mode - Liters/min	2,0 - 4,0 L/min	3,0 - 6,0 L/min	3,0 - 10,0 L/min	3,0 - 10,0 L/min	3,0 - 12,0 L/min	3,0 - 20,0 L/min
Heating mode - Liters/min	0,0 - 4,0 L/min	0,0 - 6,0 L/min	0,0 - 10,0 L/min	0,0 - 10,0 L/min	0,0 - 12,0 L/min	0,0 - 20,0 L/min
<b>Flow demand recirculating water</b>						
Cooling mode - m3/hour	1,2 m3/h	2 m3/h	3 m3/h	3 m3/h	4,5 m3/h	6 m3/h
Heating mode - m3/hour	1,2 m3/h	2 m3/h	3 m3/h	3 m3/h	4,5 m3/h	6 m3/h
<b>Water Temperature Limits</b>						
Temp In (recirculating) - ° Celcius Max	25 (55) °	25 (55) °	25 (55) °	25 (55) °	25 (55) °	25 (55) °
Temp Out (recirculating) - ° Celcius Max	65 (65) °	65 (65) °	65 (65) °	65 (65) °	65 (65) °	65 (65) °
Delta (recirculating) - AT	5 °	5 °	5 °	5 °	5 °	5 °
<b>Size L x W x H cm</b>	91 x 57 x 44 cm	99 x 67 x 49 cm	114 x 70 x 54 cm	114 x 70 x 54 cm	122 x 82 x 59 cm	148 x 86 x 74,9 cm
<b>Weight kg</b>	79 kg	94 kg	124 kg	124 kg	181 kg	232 kg

## WARRANTY

The Revomax II series and its accessories are designed and manufactured with the utmost care and craftsmanship. Airlux Technologies warrants that the delivered goods will be free from defects for the duration of the applicable warranty period, provided they are used under normal conditions from the original purchase date. If the product develops a defect within this period that is not due to improper use, Airlux Technologies will repair or replace it with a suitable replacement that offers at least the same functionality and specifications. The warranty for the replaced product will continue for the remainder of the original product's warranty period from the initial purchase date. For servicing, the owner must ship the unit to the nearest Airlux Technologies service location, as determined by the service desk. A valid original receipt will be required to confirm warranty eligibility.