

ZEVO MAX

SMART REMOTE CONTROLLER

PRO3/PRO4 MANUAL



INSTALLATION & USER GUIDE

Engineered & Designed in Holland

www.opticlimate.com

**THE FUTURE OF COOLING
JUST GOT COOLER.**

INSTALLATION

The Smart Remote Controller ensures that you can operate your OptiClimate(s) remotely (from anywhere in the world). This means that your climate system can be controlled at all times. The Smart Remote Controller is placed near the OptiClimate(s) and connected to the OptiClimate(s) with a cable. A computer or smartphone (remotely) communicates via the internet with the Smart Remote Controller, which controls the OptiClimate(s).

Connecting the Smart Remote Controller



Power

Connect the power supply and USB connector from the remote cable to the Smart Remote controller.



- ↑ USB to connect remote
- ↑ HDMI to connect monitor (view only)
- ↑ Ethernet
- ↑ Power supply from adapter

Connections

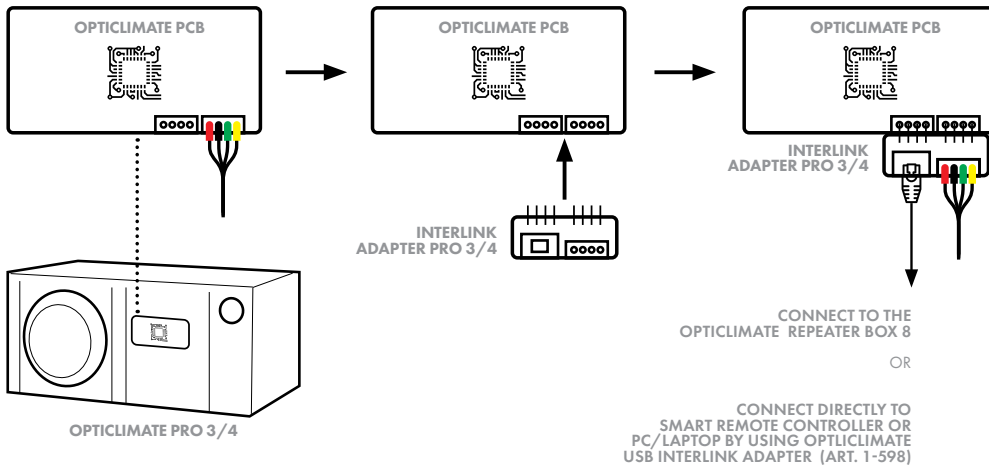
At the back of the Smart Remote Controller you find the USB, HDMI, Ethernet and power supply connections.

INSTALLATION

Control 1 Opticlimat remotely:

An Opticlimat Pro3 or Pro4 needs installation of an Interlink Adapter (Art. 1-597) on the communication-port in the Opticlimat Pro3 or Pro 4.

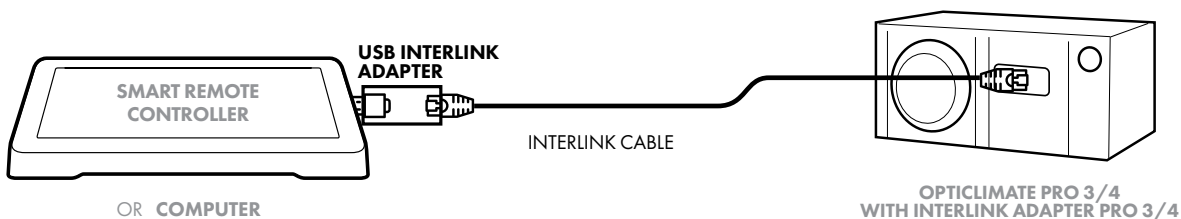
Installation of the Interlink Adapter Pro 3/4:



Control 1 Opticlimat remotely: Connect the USB Interlink Adapter to the USB-port at the Smart Remote Controller (or Computer). Use a Black Interlink Cable and install an Interlink Adapter PRO3/4 in your Opticlimat to connect the USB Interlink Adapter with your Opticlimat PRO3 or PRO4.

What do you need to connect 1 Opticlimat:

- Article 1-7801 EU or 1-7801 UK Revomax Smart Remote Controller
- Article 1-598 USB to Interlink Adapter
- 1 pc interlink cable correct length for distance between Smart Remote Controller and OptiClimate
 - 2-363 Interlink Cable Black 5mt
 - 2-364 Interlink Cable Black 10mt
 - 2-365 Interlink Cable Black 20mt
 - For longer lengths, the interlink cables can be connected with:
 - 2-367 Interlink Coupler standard (not waterproof)
 - 2-368 Interlink Coupler waterproof
- Article 1-597 Interlink Adapter Pro 3/4



INSTALLATION

Control 2 or more Opticlimate remotely:

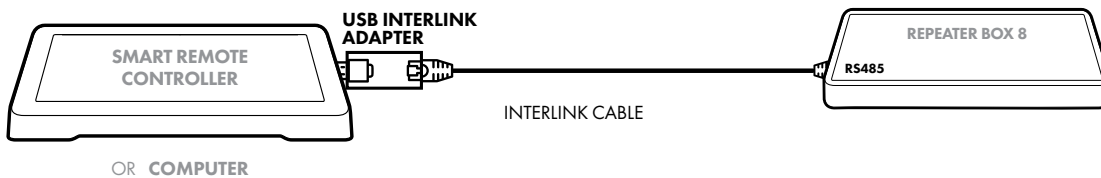
Connect your Smart Remote Controller (or Computer) with a Repeater Box 8. A Repeater Box distributes the communication from the Smart Remote Controller over 8 channels. Because of this it is possible to control up to 8 OptiClimates. Connect the USB Interlink Adapter to the USB-port of the Smart Remote Controller (or Computer). Use a Black Interlink Cable to connect the USB Interlink Adapter with your Repeater Box 8 at the RS485-port.

What is the distance between the Repeater Box and the Smart Remote Controller?

Less than 5mt: connect with supplied USB cable 5mt

More than 5mt: connect with a black Interlink cable + USB Interlink Adapter

- 2-364 Interlink Cable Black 10m
- 2-365 Interlink Cable Black 20mt



A black Interlink cable is required per OC to connect the OC to the Repeater Box. What is the distance between the Repeater Box and each (separate) OC?

- 2-363 Interlink Cable Black 5mt
- 2-364 Interlink Cable Black 10mt
- 2-365 Interlink Cable Black 20mt

For larger lengths, the interlink cables can be connected with:

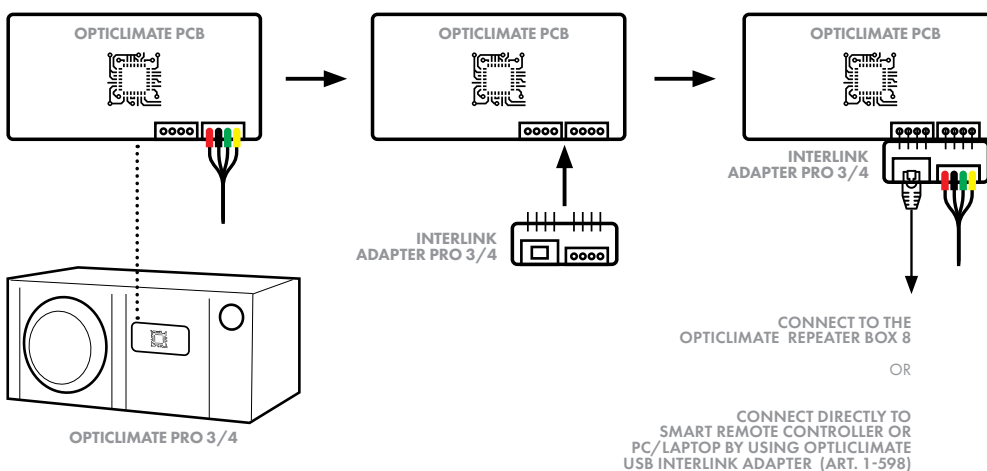
- 2-367 Interlink Coupler standard (not waterproof)
- 2-368 Interlink Coupler waterproof

If an OptiClimate PRO3 or PRO4 is connected, there must be an interlink adapter on each OC must be mounted in order to connect the interlink cable to the OC.

- 1-597 - Interlink Adapter Pro 3/4

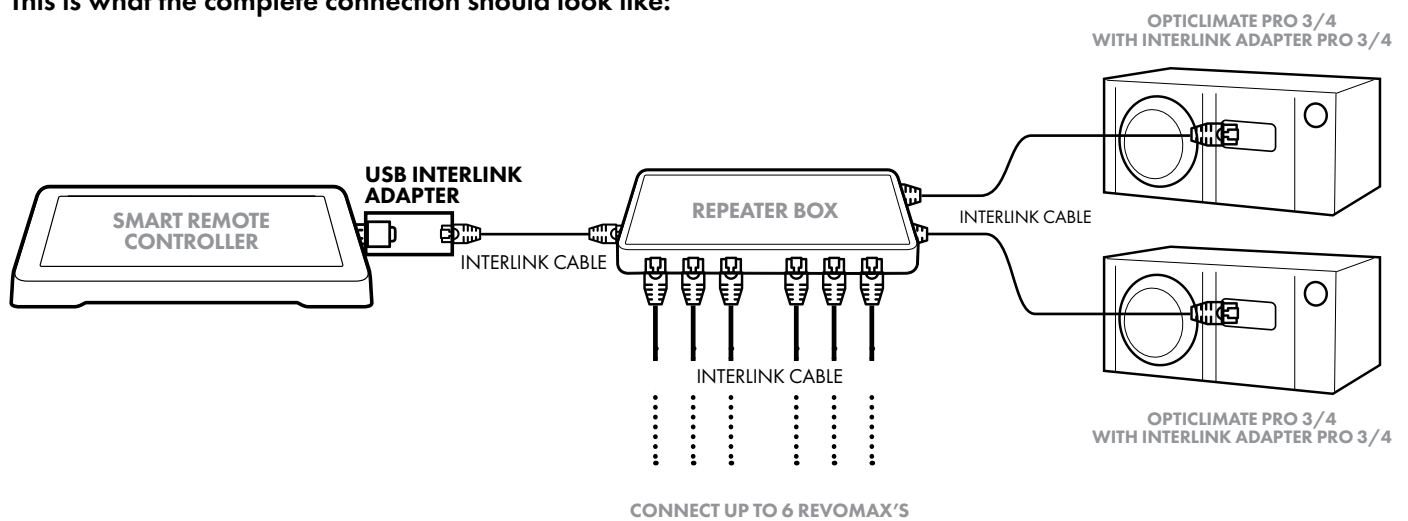
The black Interlink cable plugs directly into the OptiClimate Revomax, so a Interlink Adapter not necessary.

Installation of the Interlink Adapter Pro 3/4:



INSTALLATION

This is what the complete connection should look like:



More information is available in the user manual of the Repeater Box 8

What do you need to connect 2 to 8 Opticlimate:

- **Article 1-7801 EU or 1-7801 UK Revomax Smart Remote Controller**
- **Article 1-592 EU or 1-592-UK Repeater Box (incl 5mt USB cable)**
- **Article 1-597 Interlink Adapter Pro3/4 , number equal to number OC Pro3/4**
- **Interlink cable per OC connection**

Correct length for distance between Repeater Box and each individual OptiClimate

- 2-363 Interlink Cable Black 5mt
- 2-364 Interlink Cable Black 10mt
- 2-365 Interlink Cable Black 20mt
- For longer lengths, the interlink cables can be connected with:
 - 2-367 Interlink Coupler standard (not waterproof)
 - 2-368 Interlink Coupler waterproof

Optional:

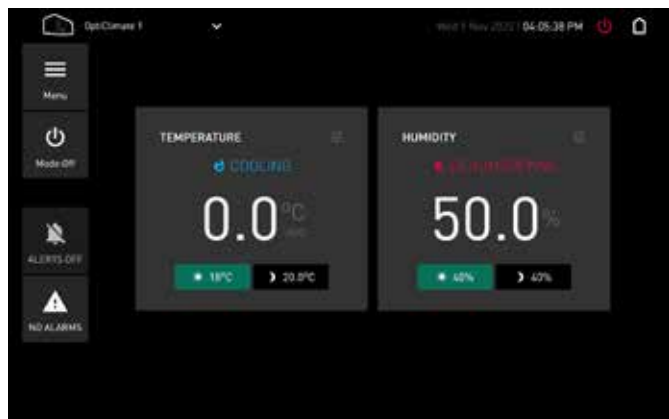
- **Article 1-598 USB to Interlink Adapter**
if the distance between the Smart Remote Controller and Repeater Box more than 5 metres.
- **2-364 Interlink Cable Black 10mt**
- **2-365 Interlink Cable Black 20mt**
Choose the right length for the interlink cable to connect the Repeater Box and Smart Remote Controller as the distance is more than 5 meters.

USING PRO3/PRO4 APPLICATION

Controlling PRO3/PRO4 Aircos

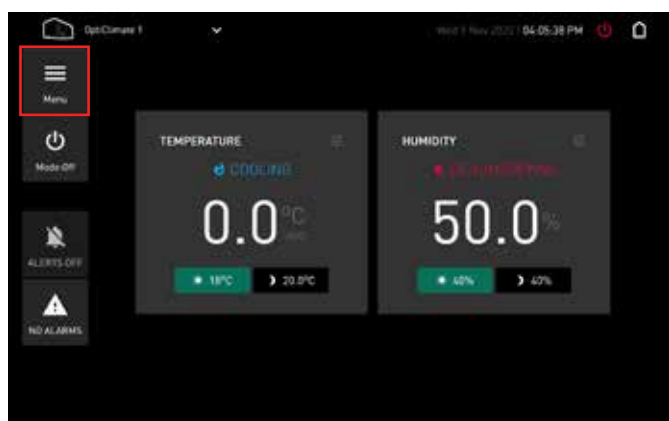
The Smart Remote Controller has also a application installed to control PRO3/PRO4 aircos. To start the PRO3/PRO4 application you have to do the following steps.

If you start the Smart Remote Controller, you will see the main screen of Revomax application.



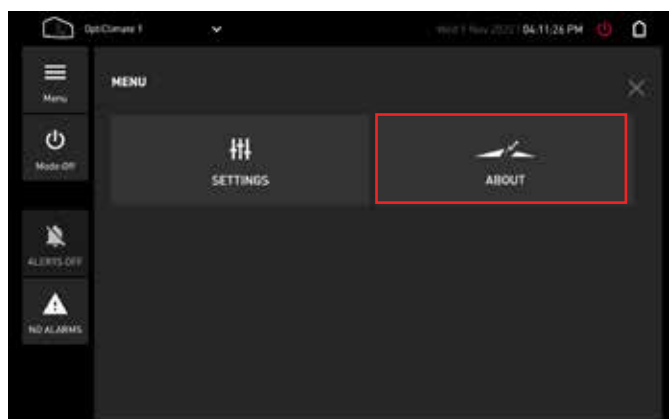
main screen

Press the 'menu' button to go to the menscreen.



main screen with menu-button highlighted

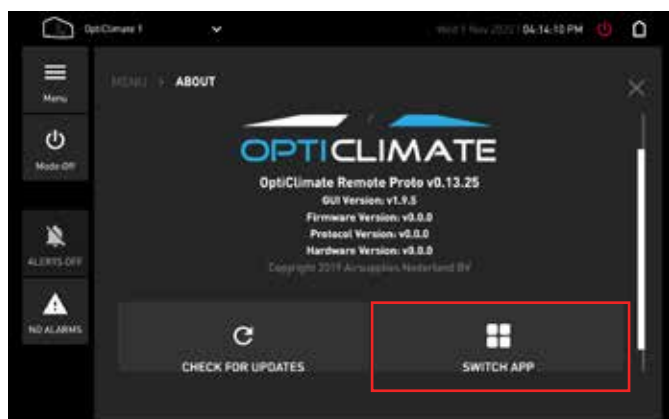
Press the 'about' button to open the about-screen



menu screen with about button

USING PRO3/PRO4 APPLICATION

Press the button 'switch app' to switch to the PRO3/PRO4 application



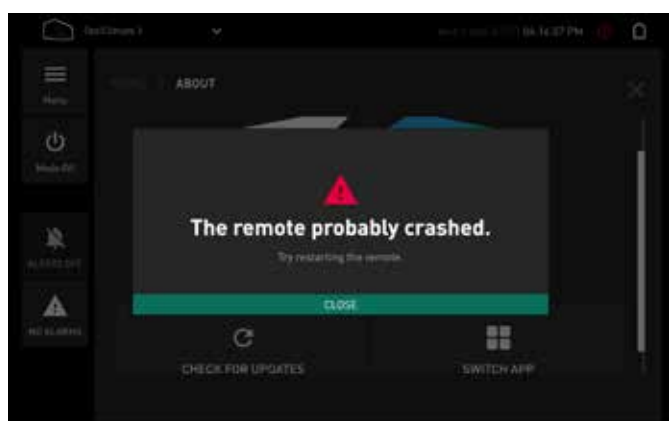
about screen with switch-app button

Confirm the warning message to accept switching to the PRO3/PRO4 application



warning dialog if you really want to switch to the other application

Some error messages may be displayed. You don't have to do anything. The revomax application will eventually close.



A warning message that the application is shutting down

After accepting the error, the Smart Remote Controller will restart. Restarting will take some time, so be patience. (Some background processes will be stopped, but this isn't visible for the user).

The PRO3/PRO4 application will start after about 20 seconds.

USING PRO3/PRO4 APPLICATION

PRO3/PRO4 application

PRO3/PRO4 aircos are connected by a network called modbus. At start of the application, the application will scan the modbus to detect connected aircos.

Scanning Modbus

-

The scanning dialog

When no aircos are found, an error will be displayed

Error

No aircos found! Please (re)connect your aircos and refresh

OK

An error dialog, no aircos found

If no aircos are found, check the cabling, and also if the aircos are turned on. No message will appear when everything went fine.

When the application is started the first time, the application will not know how to address the aircos. So an info message will appear

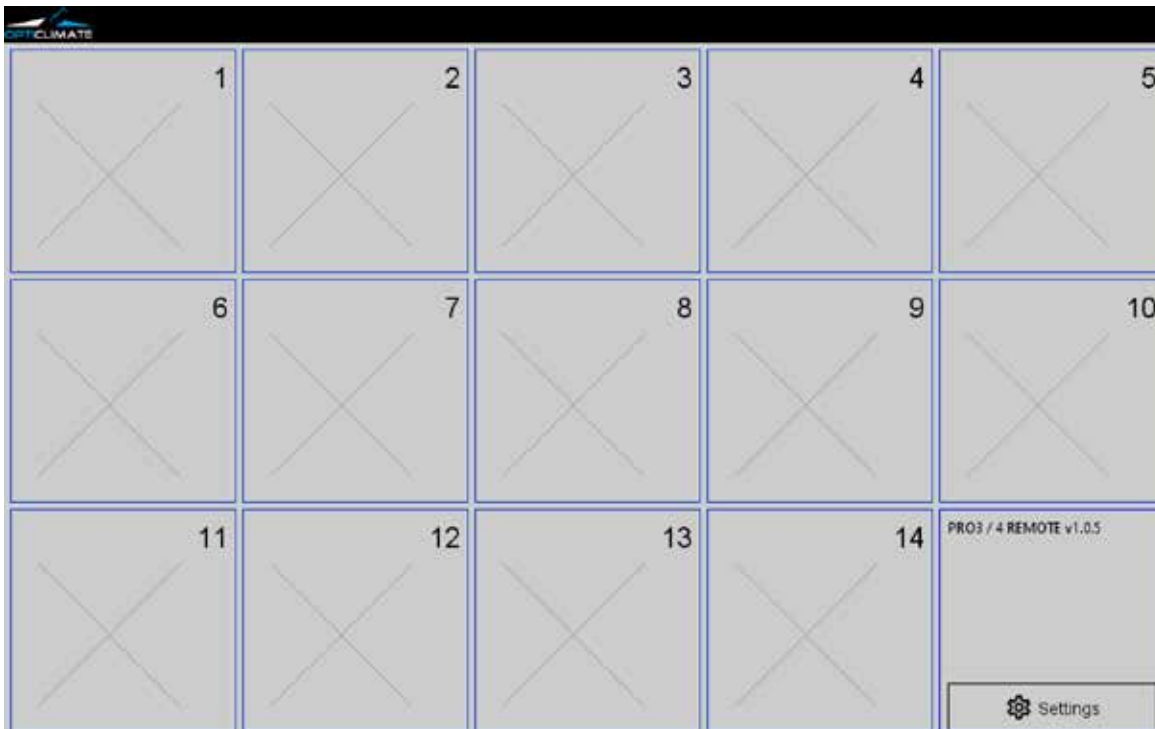
Info

Please select an modbus port to map the aircos

OK

An info dialog to tell the user to map the aircos

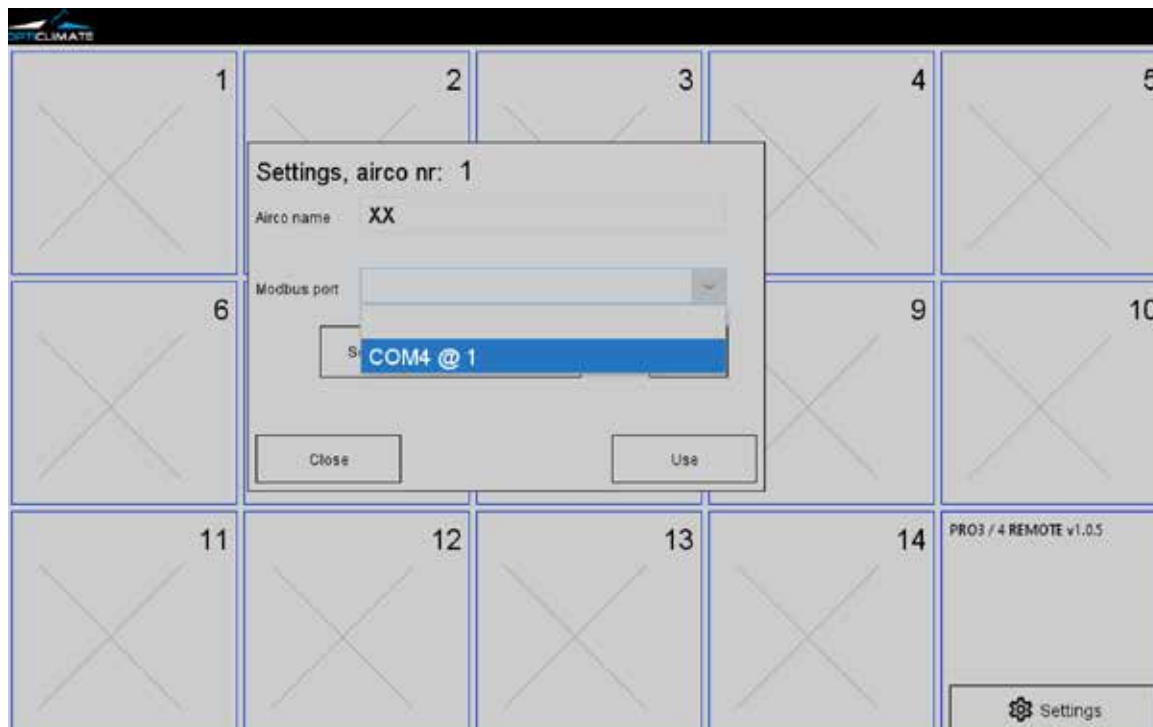
To map an aircos, you have to select one of the 14 tiles and set the modbus-port of the aircos. The selected tile will be the placeholder of the aircos



Mainscreen with 14 tiles

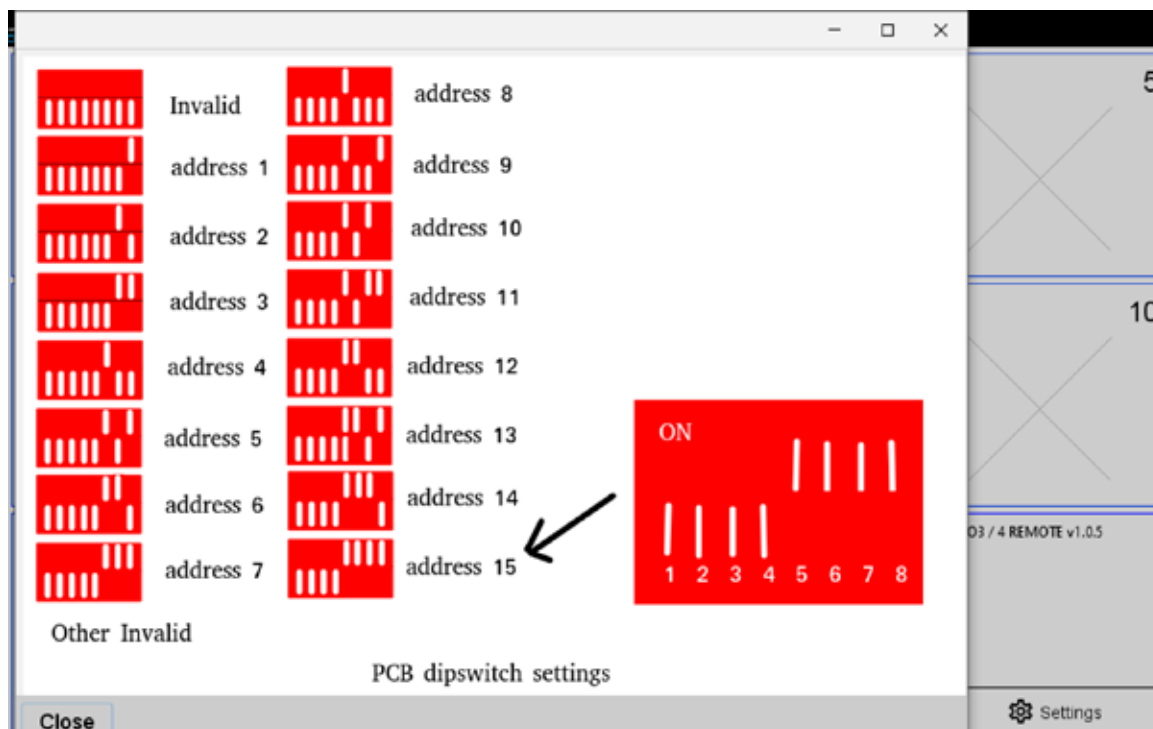
USING PRO3/PRO4 APPLICATION

By selecting a file, the mappings dialog will appear.



airco map dialog

At this dialog you can selection the modbus-port and set the airco name. Use the 'help' button to show the possible dip-switch setting of the airco. You can set the modbus-port-address with the dipswitch of the airco.



Help window with dipswitch settings

When the mapping went OK, a small remotecontrol representation will appear in the selected tile.

USING PRO3/PRO4 APPLICATION

PRO3/PRO4 application

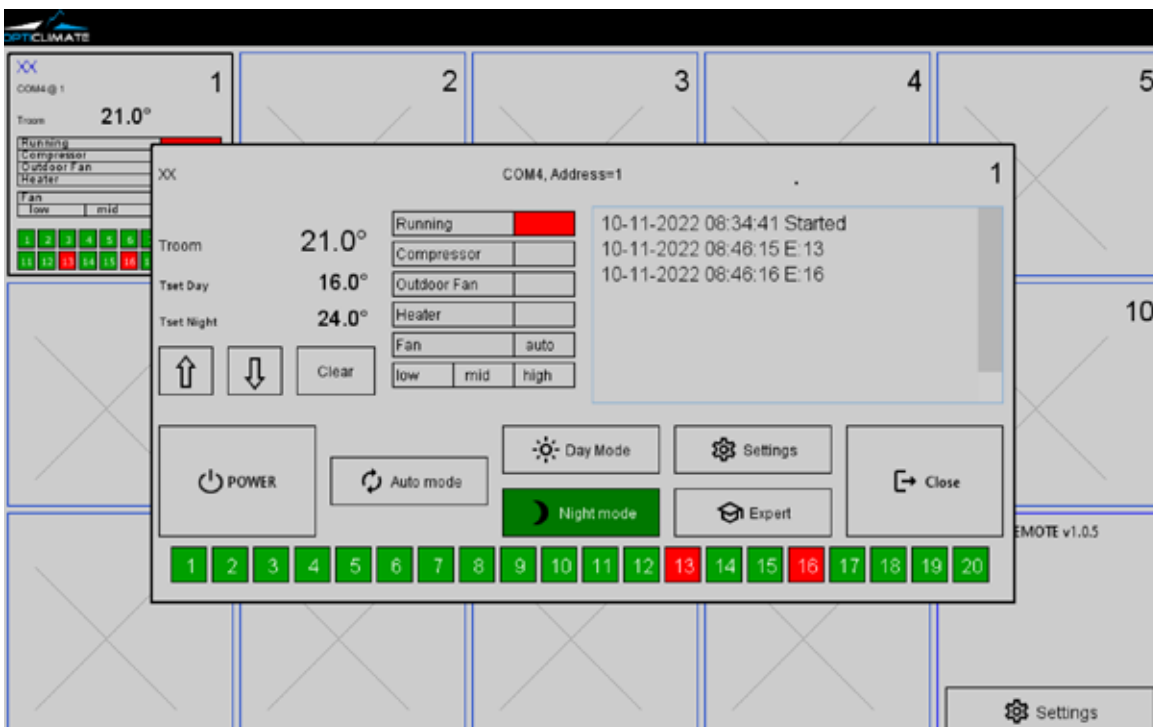
When the application is started with airco's connected, the mainscreen tiles will be filled with a small representation of a airco remote control.

You can see the status of each airco at a glance.



Mainscreen with 14 tiles

When pressing a title with an airco, a dialog will appear to control the selected airco.



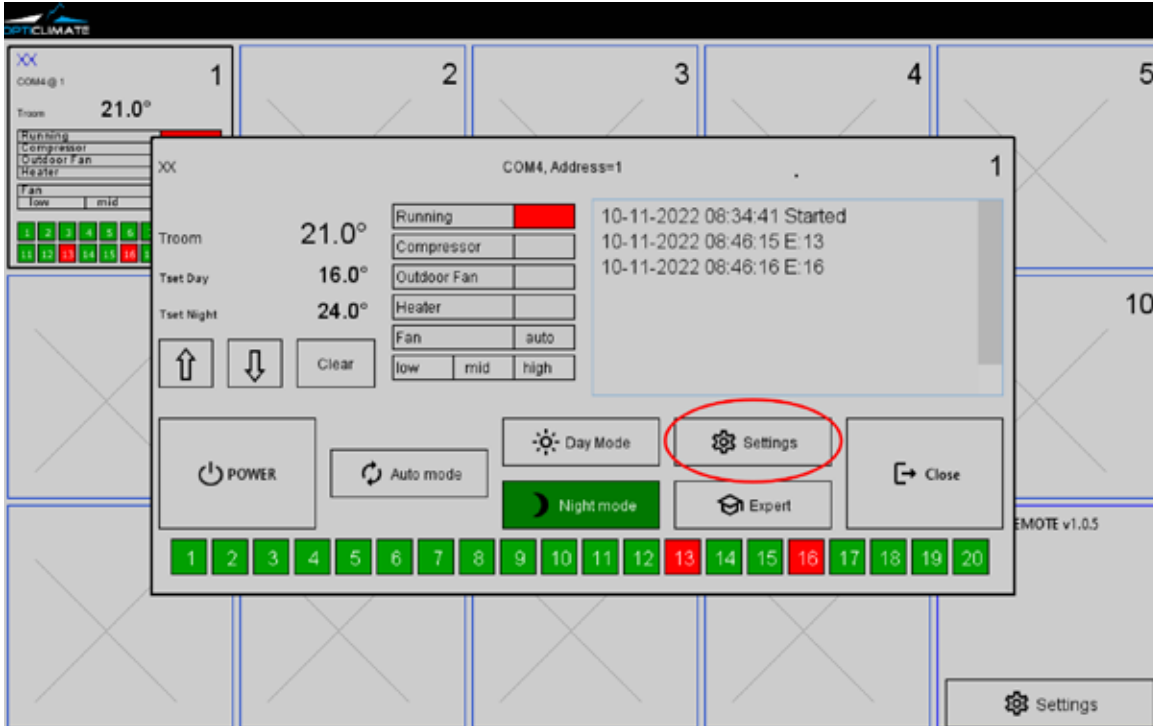
dialog with a selected airco

USING PRO3/PRO4 APPLICATION

Switch to the Revomax application

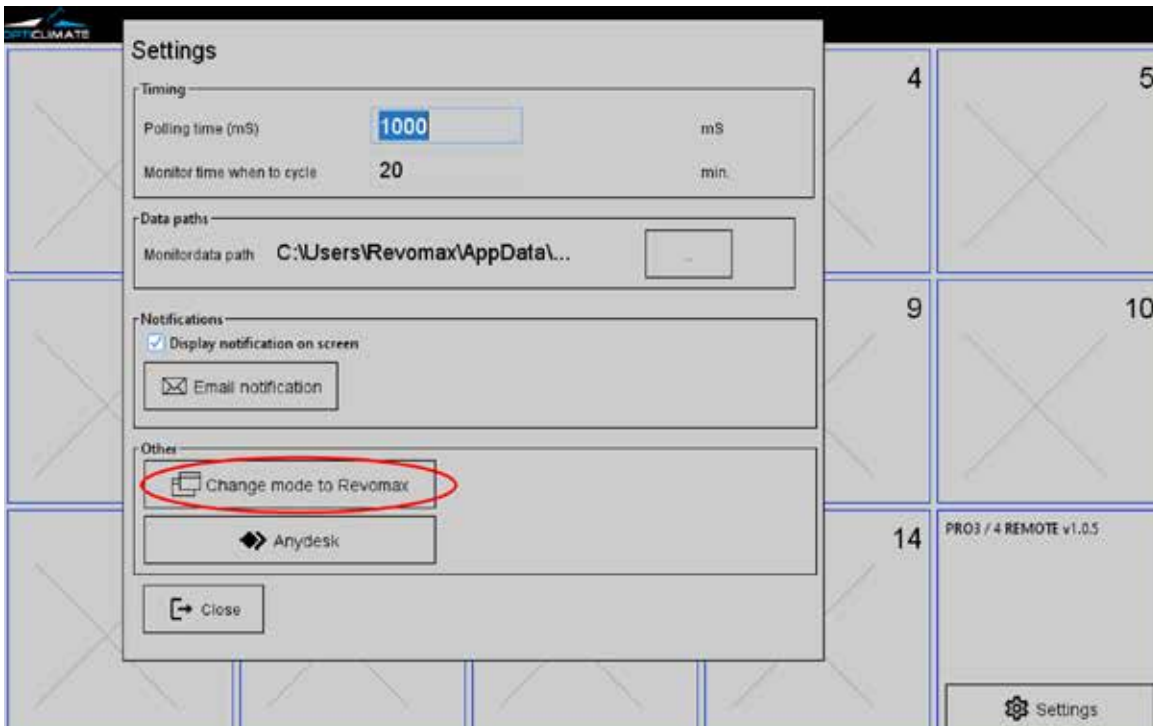
At this dialog, you will see actual airco information and buttons to control the airco.

If you want to switch to the Revomax application, you have to change to Revomax mode. You can switch to this mode in the settings dialog. You can go to the settings dialog using any of the 'settings' buttons.



dialog with a highlighted settings button

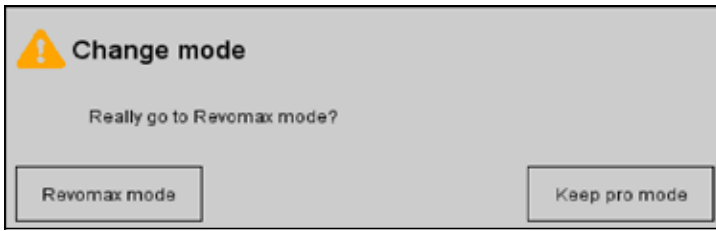
A setting dialog will appear. At this dialog you have to select the 'Change mode to Revomax' button.



dialog with a highlighted settings button

USING PRO3/PRO4 APPLICATION

A warning dialog will appear. To accept press the Revomax mode button.



dialog with to accept to change to the Revomax application

The Remomax Remote Controller will reboot.

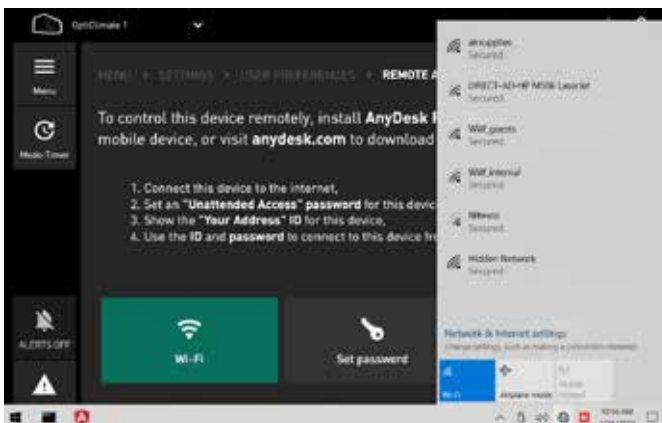
Remote control via AnyDesk

The Revomax can be remotely controlled using any device connected to the internet. The remote controller uses the Anydesk application by default and you can access the unit using MIFI (modum using a sim card), Hotspot on a mobile cellphone, WIFI and LAN.

In a LAN setup, connect the LAN cable between the Smart Remote Controller and you modem or router. Connect the Smart Remote Controller to the network.



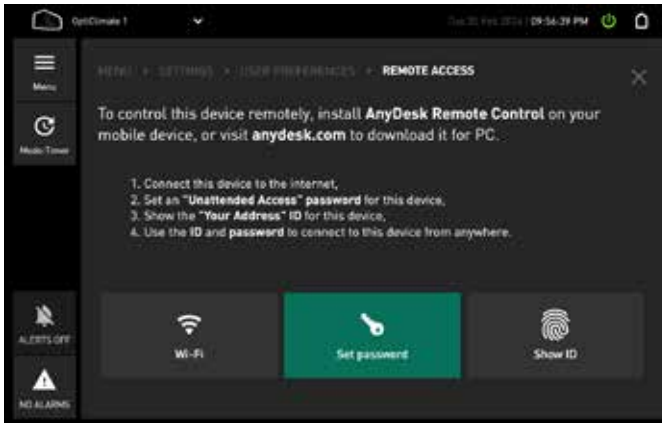
Go to Menu > Settings > User preferences > Remote Access



Tap "Wi-Fi" to open Network & Internet settings and connect to your internet access-point. You can skip this step if you use wired internet.

In a wireless setup (MIFI, Hotspot or MIFI) use the manual of the wireless device you are using and connect through Anydesk.

USING PRO3/PRO4 APPLICATION




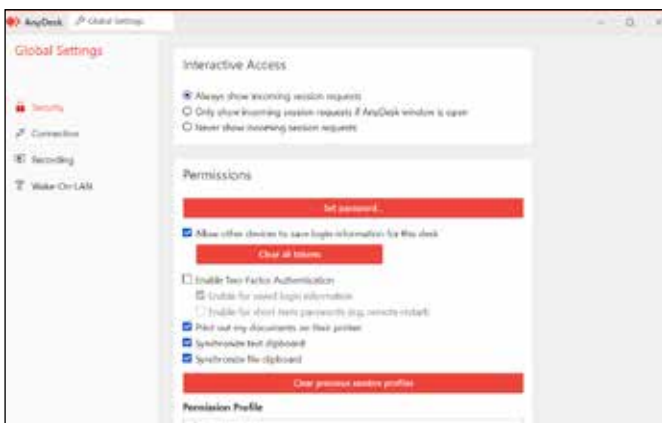
Tap "Set password"



Click "Unlock Security Settings ..."

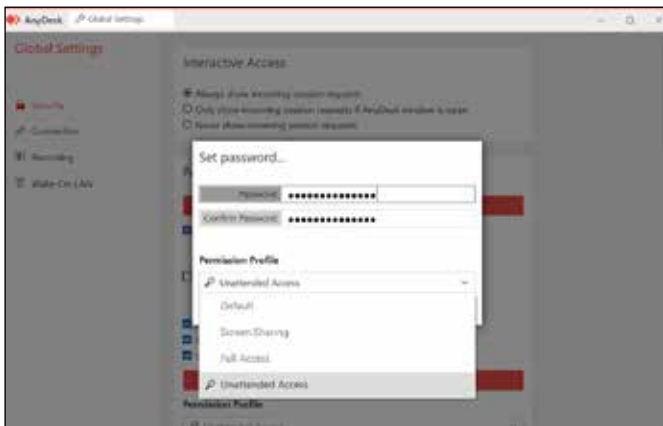


Tap the password field to open the on-screen keyboard. Unfortunately this obscures the password field, but that does not matter. Enter the password, which is either Maxi Controller for the smart remote controller with the golden startup logo or Revomax for the smart remote controller with the silver startup logo (the first letter must be upper-case). Press Enter , or close the keyboard and tap "Yes".

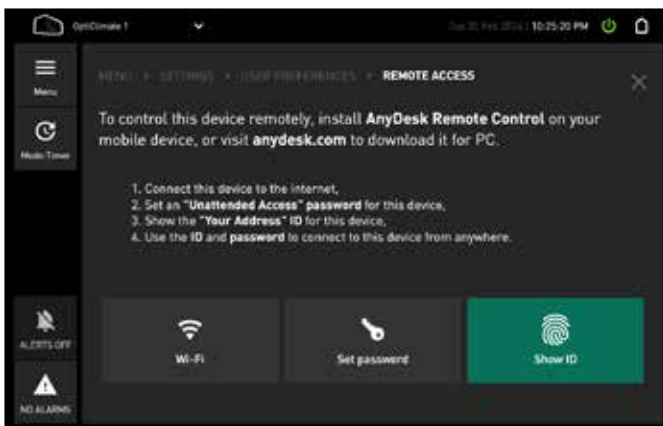


Tap "Set Password..."

USING PRO3/PRO4 APPLICATION



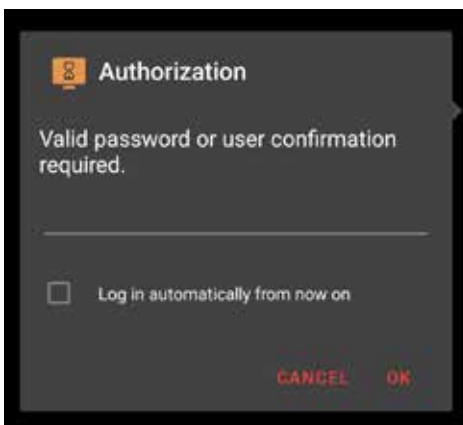
Enter the password you want to use to remotely access this controller in both fields and close the keyboard. Then tap on the "Permission Profile" box and change it to "Unattended Access" (This is important!)



Close both the settings panels by tapping the cross in the top right, then tap "Show ID"



Enter this number into the AnyDesk client (installed in the previous section) and press connect. You can now close the AnyDesk panels on the controller.



Use your AnyDesk client to test remote access to your controller now. It may take a minute before the connection succeeds.

If you get "Client Offline" you have mistyped the number or either your controller or AnyDesk client has lost internet connection. Do not attempt the option "Power On" as this has no effect.

USING PRO3/PRO4 APPLICATION



When connection succeeds, the controller shows the incoming connection. There's no need to press Accept on the controller; entering the password on the AnyDesk client will do the same. Your client will remember the 9-digit ID from now on.

Available Accessories

1-597 **Interlink Adapter Pro 3/4**

An Opticlimate PRO3 or PRO4 needs installation of an Interlink Adapter on the communication-port in the Opticlimate PRO3 or PRO4. (required per connected Opticlimate Pro3 or Pro4)

1-598 **USB Interlink Adapter**

Use to Connect with the USB-port at the Smart Remote Controller (or Computer).
(required when Smart Remote Controller -> 5mt Repeater Box 8)

1-597 **REPEATER BOX 8**

Necessary when more than 2 Opticlimates need to be monitored. With this box you can connect multiple Revomax airco's to a computer / Revemax Remote. It will repeat Modbus signals and connects up to 8 devices

2-370 **Black Interlink Cable 2mt**

2-363 **Black Interlink Cable 5mt**

2-364 **Black Interlink Cable 10mt**

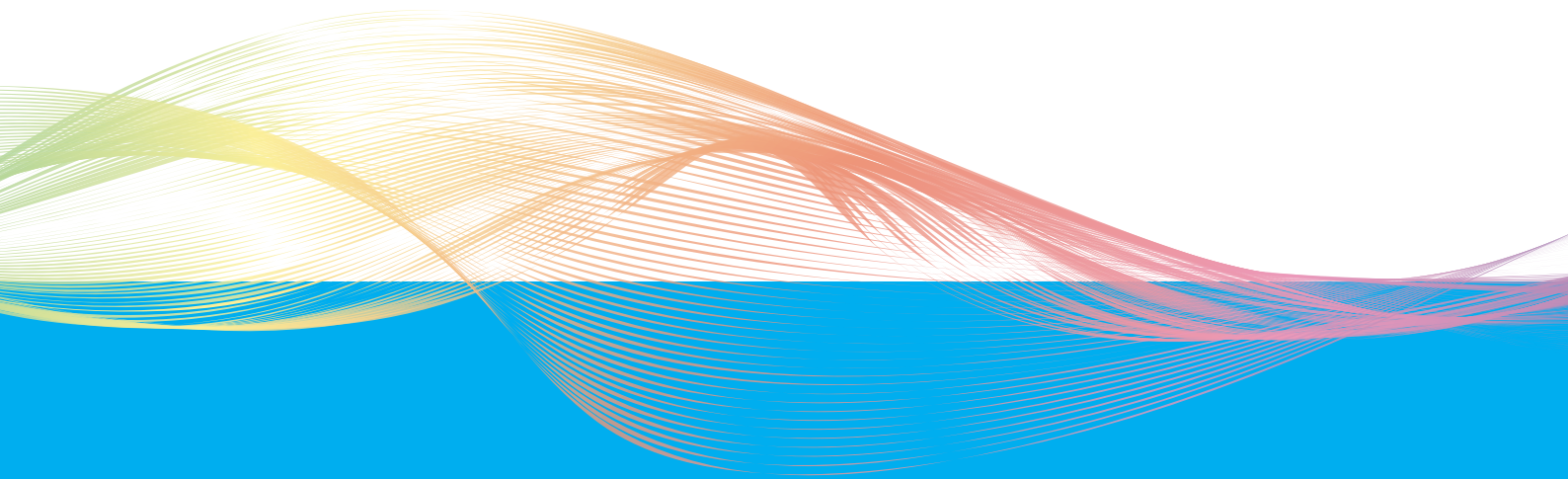
2-369 **Black Interlink Cable 20mt**

2-367 **RJ45 Interlink Coupler (not waterproof)**

2-368 **RJ45 Interlink Coupler waterproof**

ZEVO MAX

SMART REMOTE CONTROLLER
PRO3/PRO4 MANUAL



® OpticlimatE is a registered trademark of
air supplier

INSTALLATION & USER GUIDE

Engineered & Designed in Holland
Manual version 06 20 2023

www.opticlimate.com

**THE FUTURE OF COOLING
JUST GOT COOLER.**